



1301 Broad Street

Property Description:

Location: Corner of Broad and Pacific Streets in San Luis Obispo, CA

Size: 800 SF - Pacific St Entrance \$1.65/SF, NNN

2344 SF - Broad St Entrance \$1.50/SF, NNN

3144 SF - Combined \$1.50/SF, NNN

Type: Office/Retail

Notes: Downtown office/retail space with on-site parking and excellent signage opportunities. Other building features include fiber optic ready, corner entry, abundant parking, large windows, green renovations, and complete storefront remodel with Pierre Rademaker designed façade.

Mark Anderson

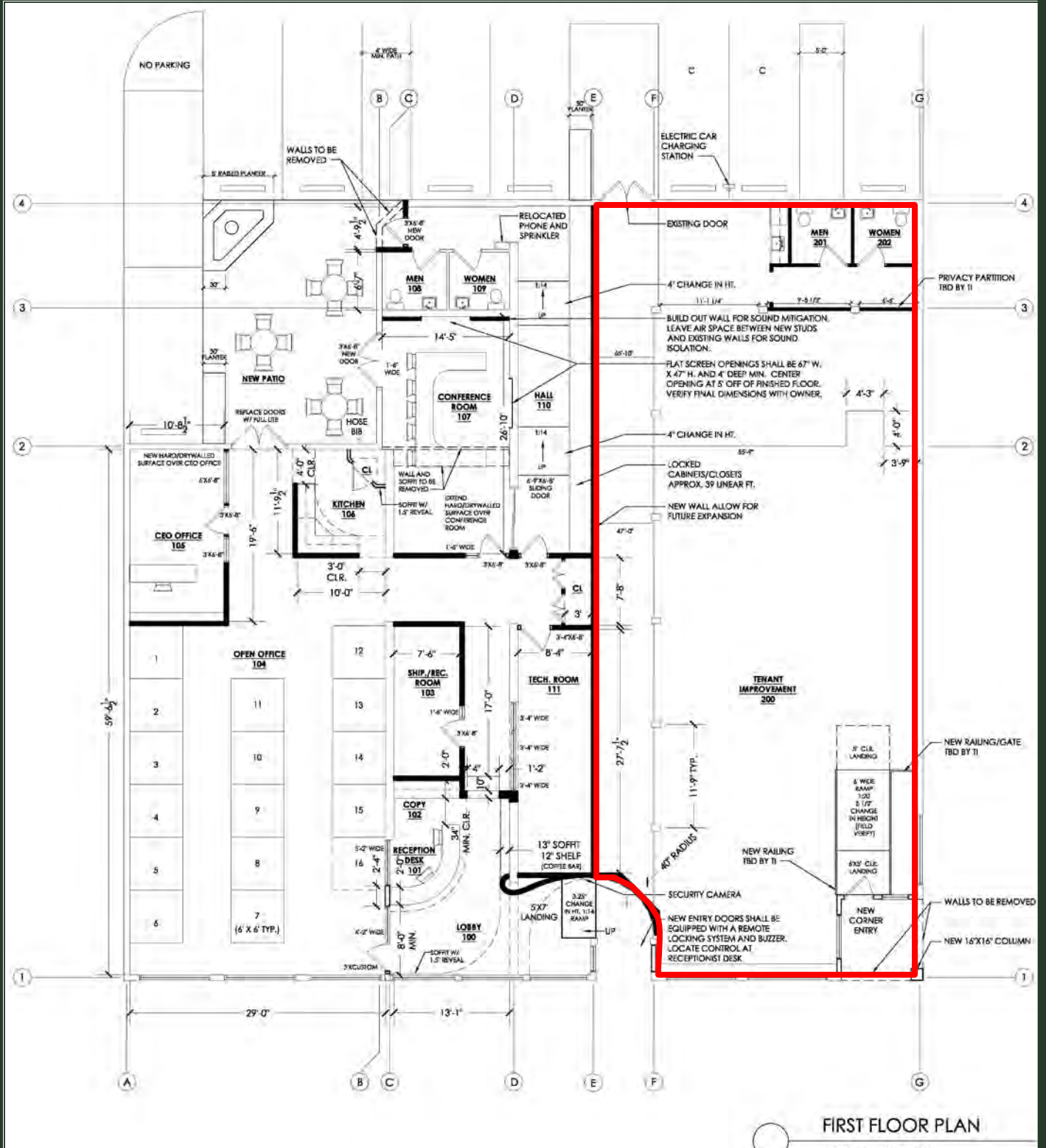
Derek Senn

805.543.1400

798 Palm St, SLO, CA 93401

mark@andersoncommercialre.com

DRE #00944530



ANDERSON COMMERCIAL REAL ESTATE SERVICES

LOCATION

