



733 Marsh Street, Basement Office Suite

Property Description:

Location: San Luis Obispo, California

Size: 3557 Square Feet

Price: \$0.90/SF, NNN

Type: Professional Office

Parking: On-Site

Notes: Newly constructed office space located downtown with on-site parking. This basement suite has been improved into nice office space and has elevator access. Other tenants in the project include; Charles Schwab, Coast Hills Credit Union, Bank of Commerce, and Exact Bid.

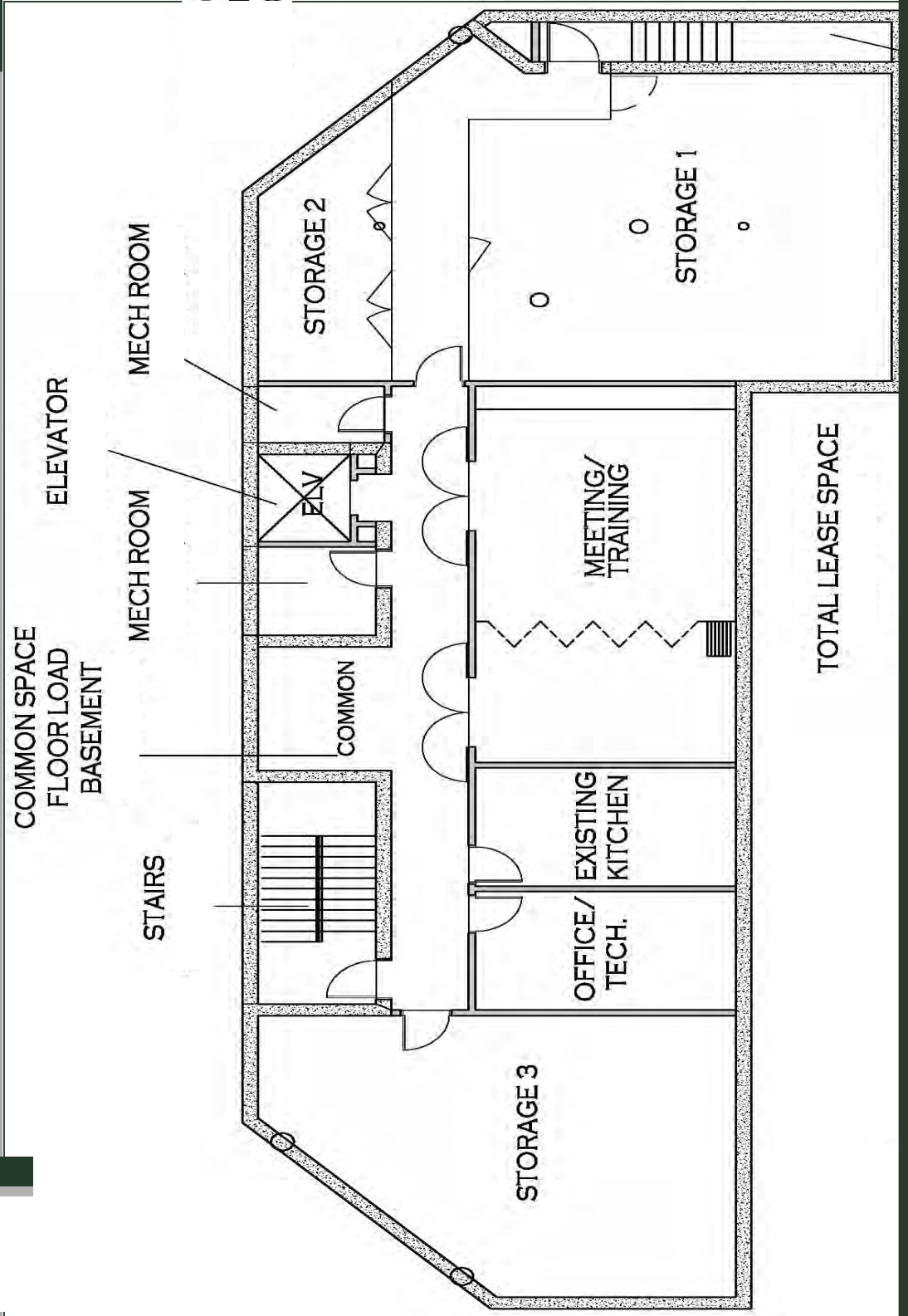
MARK ANDERSON

805.543.1400

798 PALM ST, SLO, CA 93401

AndersonCommercialRE.com

DRE #00944530



MARK ANDERSON
805.543.1400
798 PALM ST, SLO, CA 93401
AndersonCommercialRE.com
DRE #00944530

ANDERSON COMMERCIAL REAL ESTATE SERVICES

IMAGES & AERIAL VIEW



MARK ANDERSON
805.543.1400
798 PALM ST, SLO, CA 93401
AndersonCommercialRE.com
DRE #00944530